

USING THE GIS MAP CATALOG

System Requirements

Most maps are stored in PDF format (Portable Document Format) which requires Adobe Acrobat Reader to view. Acrobat Reader is free and can be downloaded at

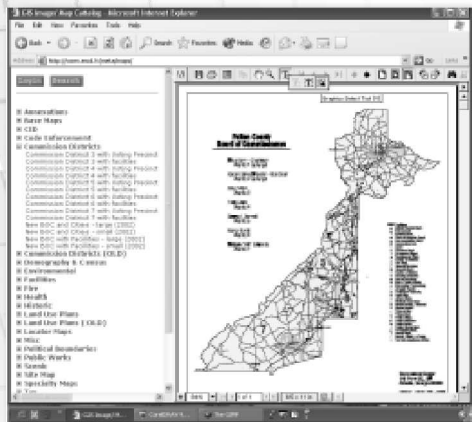
<http://www.adobe.com/products/acrobat/readermain.html>

Once Acrobat Reader is installed as a plug-in for your web browser, you can view any of dozens of maps over the County intranet.

Accessing the Map Catalog

<http://wms.co.fulton.ga.us>

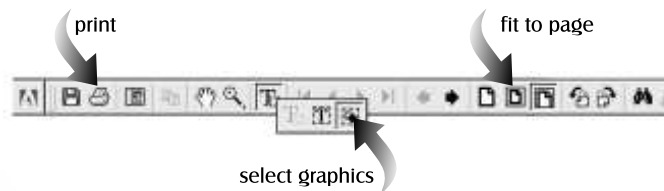
A categorized list of all available maps will appear on the left side of the page. By clicking on a map name you will be presented with information such as a short description, the map size and the cost to have it printed by the county. To view the map, click on the map name above the map information. The map will then appear in the same window.



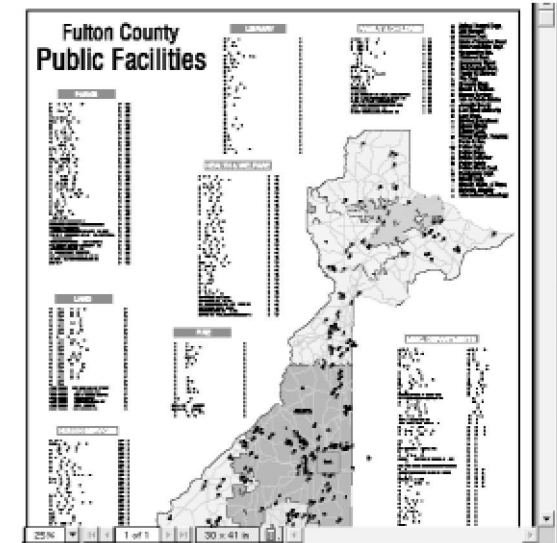
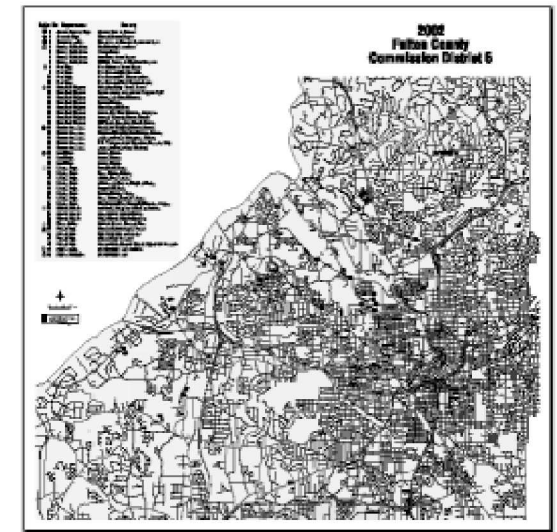
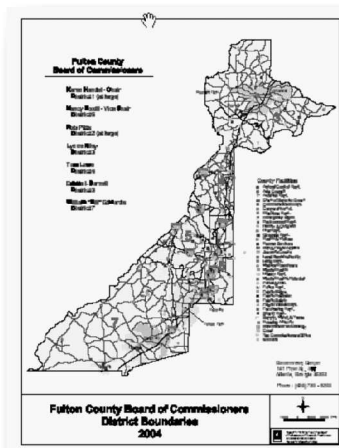
Printing Maps

To print a map, click on the **Printer** icon in the row of buttons directly above the map display. In the **Print Dialog**, enter the name of your printer.

If the map is bigger than the size of the paper you are printing to, make sure the **Fit To Page** box is checked.



To print only a portion of the map, use the **Select Graphic** tool and draw a box around the area of the map you want to print. After clicking the Printer icon, make sure the **Selected Graphic** box in the **Print Dialog** is checked.



MISSION & GOALS

To provide support and application development in the areas of computer graphics, personal computer applications, and Geographic Information Systems (GIS) for the Department of Environment and Community Development and other County Departments.

The development goals for this division are geared to providing a high level of customer service to all who have need of the large amounts of data, technical support, and graphic art capability at our disposal. Applications are developed with cost effectiveness in mind.

FULTON COUNTY BOARD OF COMMISSIONERS

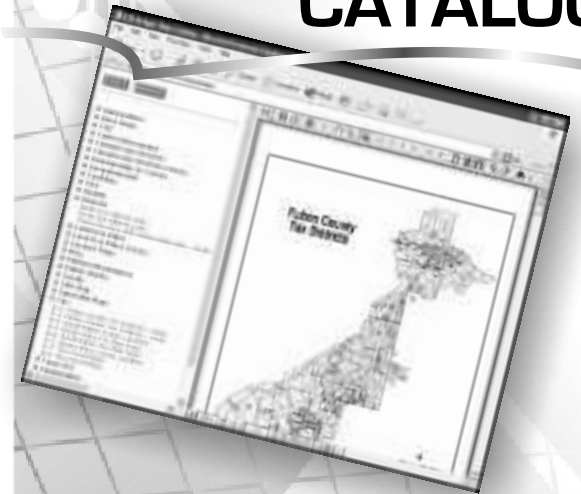
John Eaves, Chair
William "Bill" Edwards, Vice Chair
Robb Pitts
Lynne Riley
Tom Lowe
Emma I. Darnell
Nancy Boxill

COUNTY MANAGER
Zachary Williams



Fulton County Department of Environment & Community Development
Support Services
141 Pryor Street
Suite 5001
Atlanta, Georgia 30303

USING THE GIS MAP CATALOG



The **Map Catalog** gives Fulton County citizens with internet access the ability to easily search, view and print production maps from the County's geographic information system. The Map Catalog includes

- tax maps,
- annexation maps,
- facility maps,
- historical maps
- commission districts
- land use
- topographic maps

wms.co.fulton.ga.us

